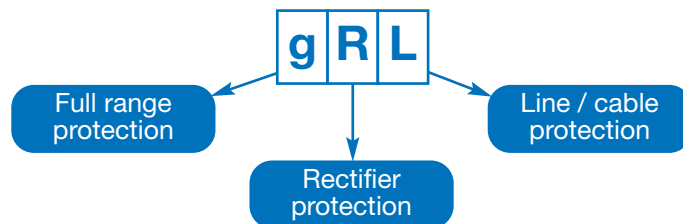
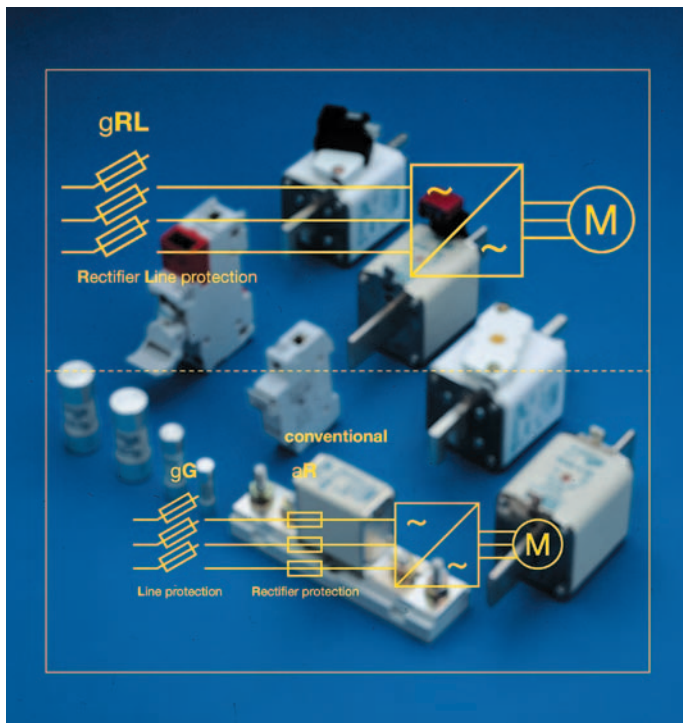


Fuses for Semiconductor Protection

Class gRL(gS)



The gRL class line of fuses offers superior performance by the combination of two fuse classes (aR and gG) into one, gRL.


Type gRL fuses provide protection for power electronic equipment and cables with low power losses and low I^2t -values simultaneously.

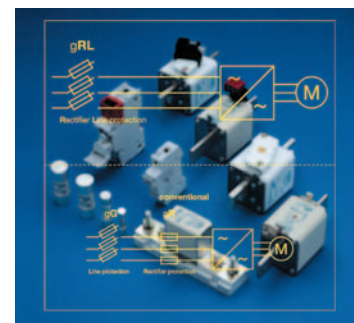
Fuse type gRL offers:

- Semiconductor protection against short circuit faults via their Ultra Rapid “gR” characteristic.
- Cable protection against overload via their “gG” characteristic.

- Knife blade contact fuses
Voltage rating: AC 690 V
Current rating: 16-630 A
Standard: DIN 43620
- Fuses with bolted contacts
Voltage rating: AC 690 V
Current rating: 16-800 A
Standard: DIN 43653
- Cylindrical fuses
Voltage rating: AC 500-690 V
Current rating: 6-100 A

Features / Benefits

- ▷ High current limitation
- ▷ Low power losses
- ▷ Semiconductor protection against short circuit faults
- ▷ Cable protection against overload current
- ▷ Low I^2t -values
- ▷ High interrupting rating up to 200 kA
- ▷ Compliance with the following standards: IEC 60269-1 / -2-1 and -4 · DIN 43620-1 · DIN 43653
- ▷ Class gRL follows the requirements of the new standardized class gS
- ▷  Recognition



Fuses for Semiconductor Protection

Type gRL(gS)

Selection Guide

Size	Rated Voltage [V]	Contact Type	Indicator Type	Part No.	Selector Guide [Page]	Techn. Data [Page]
D01	400			10 027 34	URL 4	URL 25
D02	400			10 028 34	URL 4	URL 25
D03	400			10 029 34	URL 4	URL 25
DII	500			10 005 34	URL 5	URL 26
DIII	500			10 007 34	URL 5	URL 26
NH 000	690	knife contacts	combi indicator	20 477 34	URL 6	URL 27
NH 00	690	knife contacts	combi indicator	20 209 34	URL 7	URL 27
NH 1	690	knife contacts	combi indicator	20 211 34	URL 8	URL 28
NH 2	690	knife contacts	combi indicator	20 212 34	URL 9	URL 29
NH 3	690	knife contacts	combi indicator	20 213 34	URL 10	URL 30
NH 000	690	DIN 80	top indicator	20 282 34	URL 11	URL 27
NH 000	690	DIN 80	with micro switch fitting	20 558 34	URL 13	URL 27
NH 00	690	DIN 80	top indicator	20 189 34	URL 12	URL 27
NH 00	690	DIN 80	with micro switch fitting	20 412 34	URL 14	URL 27
SQB1	690	M 8	with micro switch fitting	20 252 34	URL 15	URL 28
SQB2	690	M 10	with micro switch fitting	20 253 34	URL 16	URL 29
SQB3	690	M 12	with micro switch fitting	20 254 34	URL 17	URL 30
SQB1	690	DIN 110	with micro switch fitting	20 271 34	URL 18	URL 28
SQB2	690	DIN 110	with micro switch fitting	20 274 34	URL 19	URL 29
SQB3	690	DIN 110	with micro switch fitting	20 277 34	URL 20	URL 30
6.3 x 32	400			70 065 84	URL 21	URL 31
10 x 38	600	cyl. contact caps		60 034 34	URL 22	URL 32
10 x 38	600	PCB mounting		60 064 34	URL 22	URL 32
14 x 51	690	cyl. contact caps		50 124 34	URL 23	URL 33
14 x 51	690	cyl. contact caps	with striker	50 126 34	URL 23	URL 33
14 x 51	690	cyl. contact caps		50 129 34	URL 23	URL 33
22 x 58	690	cyl. contact caps		50 140 34	URL 24	URL 34
22 x 58	690	cyl. contact caps	with striker	50 142 34	URL 24	URL 34

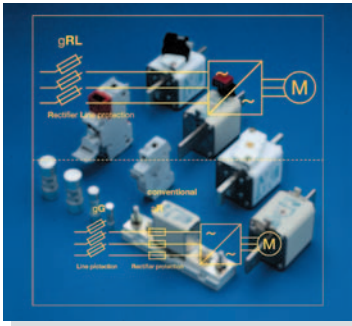
Selection Guide Fuse-Base for Fuses with Knife Contacts

Rated Voltage [V]	Size	Part No.	Techn. Data [Page]
690	00	21 001 01	URL 42
690	00	21 001 10	URL 42
690	1	21 003 01	URL 43
690	2	21 004 01	URL 43
690	3	21 005 01	URL 43

Selection Guide Fuse-Base for Fuses with Screwcontacts

Rated Voltage [V]	Fixing Center [mm]	Rated Current [A]	Part No.	Techn. Data [Page]
900	80	630	21 313 01	URL 35
1400	110	630	21 323 01	URL 35
900	80	1250	21 313 02	URL 36
1400	110	1250	21 323 02	URL 36
1000	80	400	21 189 01	URL 37
1000	80	400	21 189 08	URL 37

with covers



Fuses for Semiconductor Protection

Type gRL(gS)

Selection Guide Fuse-Clips

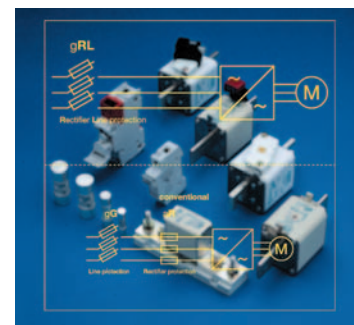
Size	Part. No.	Page	Type	Size	Part. No.	Page	Type
10 mm	61 017 01.2	38		14 mm	58 058 06	39	PCB
14 mm	61 001 01.2	38	screw	22 mm	58 060 06	39	mountable
22 mm	61 002 01.3	38	mountable				
27 mm	61 004 01.3	38					

Selection Guide Micro Switch

Type	Rated Voltage [V]	Part No.	Selector Guide [Page]
GL-switch	250	28 002 01	URL 40
GL-switch	250	28 002 02	URL 40
B-switch	250	28 003 10	URL 41
B-switch	250	28 003 11	URL 41
B-switch	250	28 003 12	URL 41
B-switch	250	28 003 20	URL 41
B-switch	250	28 003 21	URL 41
B-switch	250	28 003 22	URL 41
B-switch	250	28 004 10	URL 41
B-switch	250	28 004 11	URL 41
B-switch	250	28 004 12	URL 41
B-switch	250	28 004 20	URL 41
B-switch	250	28 004 21	URL 41
B-switch	250	28 004 22	URL 41

Selection Guide ZS-Modules for Fuses with Cylindrical Contact Caps

Size	Indicator Type	Part No.	Techn. Data [Page]
10 x 38	1 pole	51 063 04	URL 44
10 x 38	2 pole	51 063 04.2	URL 44
10 x 38	3 pole	51 063 04.3	URL 44
10 x 38	1 pole LED indicator	51 063 04.L	URL 44
10 x 38	2 pole LED indicator	51 063 04.2L	URL 44
10 x 38	3 pole LED indicator	51 063 04.3L	URL 44
14 x 51	1 pole	51 058 04	URL 44
14 x 51	2 pole	51 058 04.2	URL 44
14 x 51	3 pole	51 058 04.3	URL 44
14 x 51	1 pole microswitch	51 058 04.S	URL 44
14 x 51	3 pole microswitch	51 058 04.3S	URL 44
22 x 58	1 pole	51 060 04	URL 44
22 x 58	2 pole	51 060 04.2	URL 44
22 x 58	3 pole	51 060 04.3	URL 44
22 x 58	1 pole microswitch	51 060 04.S	URL 44
22 x 58	3 pole microswitch	51 060 04.3S	URL 44



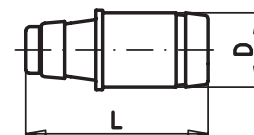
Fuses for Semiconductor Protection

Type gRL(gS)

Size **D01** Rated Voltage **AC 400 V** Standard **IEC 60269-4 / VDE 0636 part 40**

Rated Current [A]	Part No.	UL Rec.	Weight [kg/1]	Pack
6	10 027 34.6		0.006	50
10	10 027 34.10		0.006	50
13	10 027 34.13		0.006	50
16	10 027 34.16		0.006	50

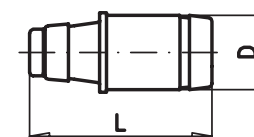
D 0.43" (11 mm)
L 1.42" (36 mm)



Size **D02** Rated Voltage **AC 400 V** Standard **IEC 60269-4 / VDE 0636 part 40**

Rated Current [A]	Part No.	UL Rec.	Weight [kg/1]	Pack
20	10 028 34.20		0.014	50
25	10 028 34.25		0.014	50
35	10 028 34.35		0.014	50
50	10 028 34.50		0.014	50
63	10 028 34.63		0.014	50

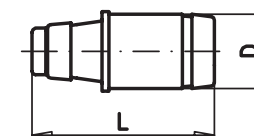
D 0.60" (15,3 mm)
L 1.42" (36 mm)

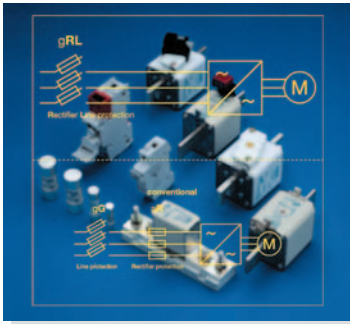


Size **D03** Rated Voltage **AC 400 V** Standard **IEC 60269-4 / VDE 0636 part 40**

Rated Current [A]	Part No.	UL Rec.	Weight [kg/1]	Pack
80	10 029 34.20		0.042	10
100	10 029 34.25		0.042	10

D 0.90" (22,5 mm)
L 1.70" (43 mm)



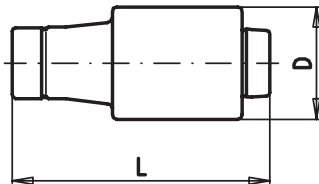


Fuses for Semiconductor Protection

Type gRL(gS)

Size **DII** Rated Voltage **AC 500 V** Standard **IEC 60269-4 / VDE 0636 part 40**

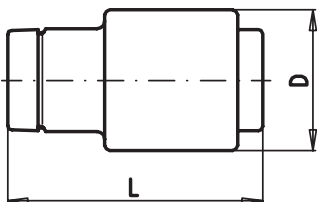
Rated Current [A]	Part No.	UL Rec.	Weight [kg/1]	Pack
6	10 005 34.6		0.031	25
10	10 005 34.10		0.031	25
13	10 005 34.13		0.031	25
16	10 005 34.16		0.031	25
20	10 005 34.20		0.031	25
25	10 005 34.25		0.031	25



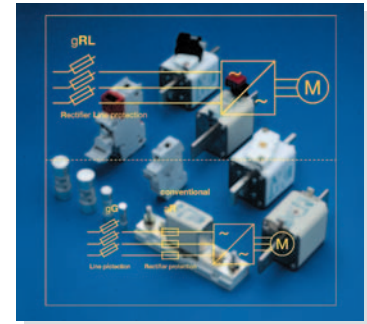
D 0.87" (22 mm)
L 1.97" (50 mm)

Size **DIII** Rated Voltage **AC 500 V** Standard **IEC 60269-4 / VDE 0636 part 40**

Rated Current [A]	Part No.	UL Rec.	Weight [kg/1]	Pack
35	10 007 34.35		0.053	25
50	10 007 34.50		0.053	25
63	10 007 34.63		0.053	25



D 1.06" (27 mm)
L 1.97" (50 mm)



Fuses for Semiconductor Protection

Type gRL(gS)

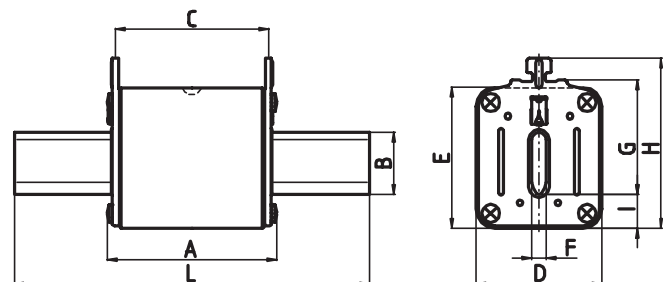
Size
000

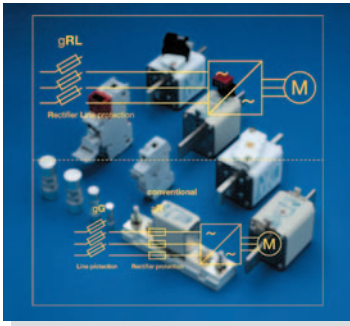
Rated Voltage
AC 690/700 V

Standard
IEC 60269-4 / UL 248-13 / DIN 43620/1

Rated Current [A]	Part No.	UL Rec.	Weight [kg/1]	Pack
16	20 477 34.16	✓	0.11	3
20	20 477 34.20	✓	0.11	3
25	20 477 34.25	✓	0.11	3
32	20 477 34.32	✓	0.11	3
40	20 477 34.40	✓	0.11	3
50	20 477 34.50	✓	0.11	3
80	20 477 34.80	✓	0.11	3

A _{max}	2.13" (54 mm)
B	0.60" (15 mm)
C	1.85" (47 mm)
D	0.80" (20.5 mm)
E	1.60" (40.5 mm)
F	0.24" (6 mm)
G	1.38" (35 mm)
H	2.05" (52 mm)
I	0.28" (7 mm)
L	3.07" (78 mm)



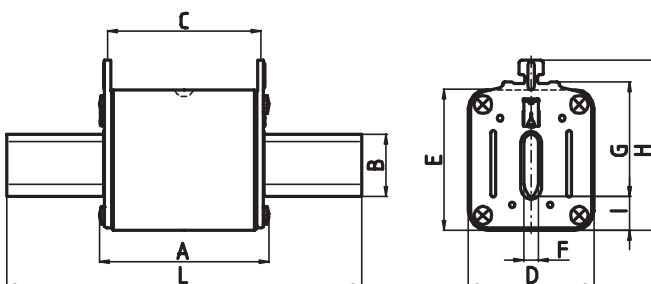


Fuses for Semiconductor Protection

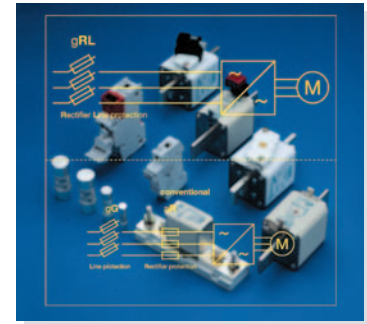
Type gRL(gS)

Size 00	Rated Voltage AC 690/700 V	Standard IEC 60269-4 / UL 248-13 / DIN 43620/1
-------------------	--------------------------------------	--

Rated Current [A]	Part No.	UL Rec.	Weight [kg/1]	Pack
100	20 209 34.100	✓	0.154	3
125	20 209 34.125	✓	0.154	3
160	20 209 34.160	✓	0.154	3
200	20 209 34.200	✓	0.154	3



A _{max}	2.13" (54 mm)
B	0.59" (15 mm)
C	1.85" (47 mm)
D	1.16" (29.5 mm)
E	1.80" (46 mm)
F	0.24" (6 mm)
G	1.38" (35 mm)
H	2.28" (58 mm)
I	0.50" (13 mm)
L	3.07" (78 mm)



Fuses for Semiconductor Protection

Type gRL(gS)

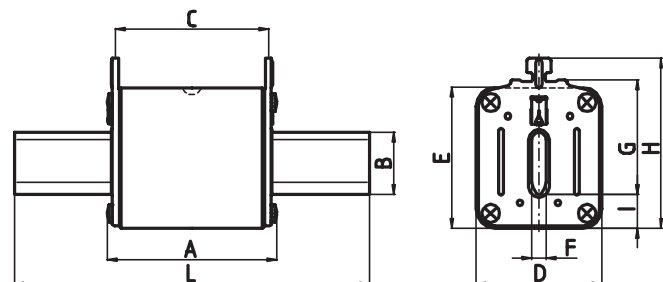
Size
1

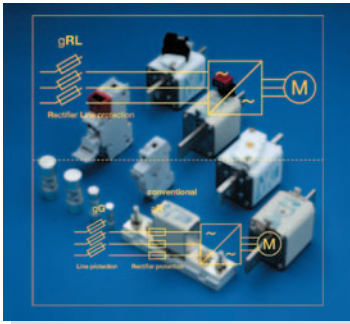
Rated Voltage
AC 690/700 V

Standard
IEC 60269-4 / UL 248-13 / DIN 43620/1

Rated Current [A]	Part No.	UL Rec.	Weight [kg/1]	Pack
63	20 211 34.63	✓	0.37	3
80	20 211 34.80	✓	0.37	3
100	20 211 34.100	✓	0.37	3
125	20 211 34.125	✓	0.37	3
160	20 211 34.160	✓	0.37	3
200	20 211 34.200	✓	0.37	3
250	20 211 34.250	✓	0.37	3
315	20 211 34.315	✓	0.37	3

- A_{max} 2.95" (75 mm)
- B 0.80" (20 mm)
- C 2.56" (65 mm)
- D 1.65" (42 mm)
- E 2.03" (51.5 mm)
- F 0.24" (6 mm)
- G 1.57" (40 mm)
- H 2.52" (64 mm)
- I 0.55" (14 mm)
- L 5.30" (135 mm)



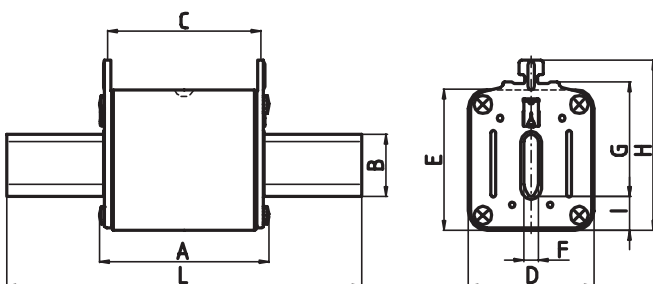


Fuses for Semiconductor Protection

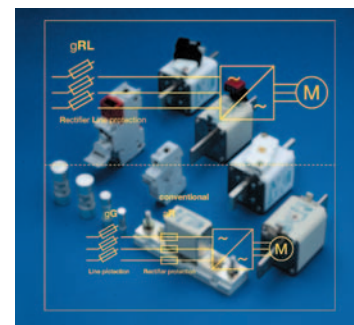
Type gRL(gS)

Size 2	Rated Voltage AC 690/700 V	Standard IEC 60269-4 / UL 248-13 / DIN 43620/1
------------------	--------------------------------------	--

Rated Current [A]	Part No.	UL Rec.	Weight [kg/1]	Pack
160	20 212 34.160	✓	0.37	3
200	20 212 34.200	✓	0.37	3
250	20 212 34.250	✓	0.37	3
315	20 212 34.315	✓	0.65	3
400	20 212 34.400	✓	0.65	3
450	20 212 34.450	✓	0.65	3
500	20 212 34.500	✓	0.65	3



20 212 34 ≤ 250 A		20 212 34 ≥ 315 A	
A _{max}	2.95" (75 mm)	A _{max}	2.95" (75 mm)
B	0.80" (20 mm)	B	1.02" (26 mm)
C	2.56" (65 mm)	C	2.56" (65 mm)
D	1.65" (42 mm)	D	2.10" (53 mm)
E	2.03" (51.5 mm)	E	2.32" (59 mm)
F	0.24" (6 mm)	F	0.24" (6 mm)
G	1.90" (48 mm)	G	1.90" (48 mm)
H	2.83" (72 mm)	H	2.83" (72 mm)
I	0.55" (14 mm)	I	0.55" (14 mm)
L	5.90" (150 mm)	L	5.90" (150 mm)



Fuses for Semiconductor Protection

Type gRL(gS)

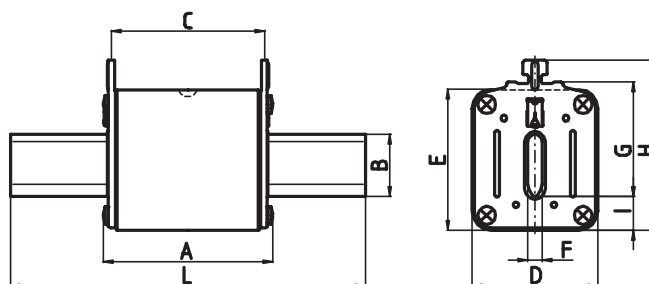
Size
3

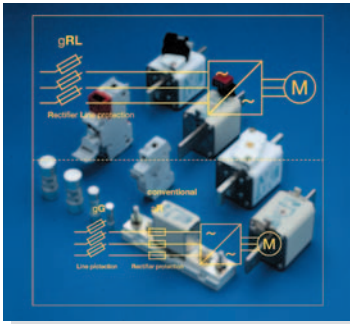
Rated Voltage
AC 690/700 V

Standard
IEC 60269-4 / UL 248-13 / DIN 43620/1

Rated Current [A]	Part No.	UL Rec.	Weight [kg/1]	Pack
315	20 213 34.315		0.65	3
400	20 213 34.400		0.88	3
500	20 213 34.500		0.88	3
630	20 213 34.630		0.88	3

20 213 34 ≤ 315 A		20 213 34 ≥ 400 A	
A _{max}	2.95" (75 mm)	A _{max}	2.95" (75 mm)
B	1.02" (26 mm)	B	1.26" (32 mm)
C	2.56" (65 mm)	C	2.56" (65 mm)
D	2.10" (53 mm)	D	2.56" (65 mm)
E	2.32" (59 mm)	E	2.90" (73.5 mm)
F	0.24" (6 mm)	F	0.24" (6 mm)
G	2.36" (60 mm)	G	2.36" (60 mm)
H	3.27" (83 mm)	H	3.40" (86 mm)
I	0.55" (14 mm)	I	0.67" (17 mm)
L	5.90" (150 mm)	L	5.90" (150 mm)



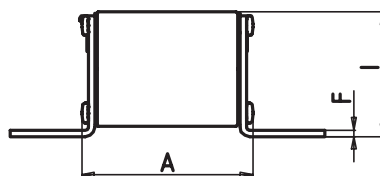
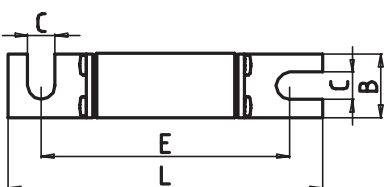


Fuses for Semiconductor Protection

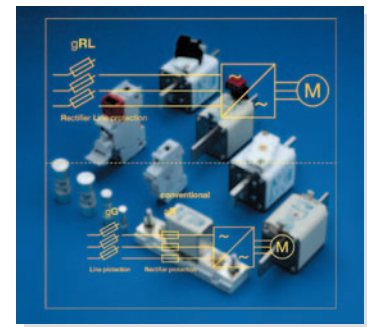
Type gRL(gS)

Size 000	Rated Voltage AC 690 V	Standard IEC 60269-4 / UL 248-13 / DIN 43653
--------------------	----------------------------------	--

Rated Current [A]	Part No.	UL Rec.	Weight [kg/1]	Pack
16	20 282 34.16	✓	0.17	6
20	20 282 34.20	✓	0.17	6
25	20 282 34.25	✓	0.17	6
32	20 282 34.32	✓	0.17	6
40	20 282 34.40	✓	0.17	6
50	20 282 34.50	✓	0.17	6
63	20 282 34.63	✓	0.17	6
80	20 282 34.80	✓	0.17	6



A	2.17" (55 mm)
B	0.80" (20 mm)
C	0.33" (8.5 mm)
D	0.80" (20.4 mm)
E	3.07" (78 mm)
F	0.08" (2 mm)
I	1.54" (39 mm)
L _(max)	3.94" (100 mm)



Fuses for Semiconductor Protection

Type gRL(gS)

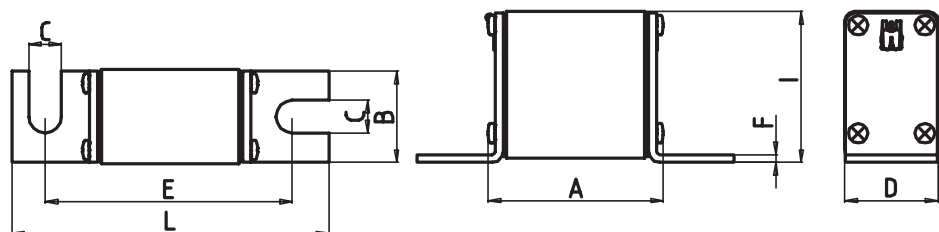
Size
00

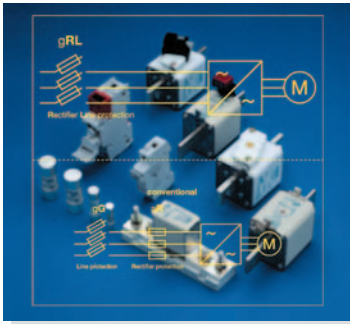
Rated Voltage
AC 690 / 700 V

Standard
IEC 60269-4 / UL 248-13 / DIN 43653

Rated Current [A]	Part No.	UL Rec.	Weight [kg/1]	Pack
100	20 189 34.100	✓	0.19	3
125	20 189 34.125	✓	0.19	3
160	20 189 34.160	✓	0.19	3
200	20 189 34.200	✓	0.19	3

- A 2.17" (55 mm)
- B 1.13" (28,8 mm)
- C 0.40" (10,3 mm)
- D 1.16" (29,5 mm)
- E 3.07" (78 mm)
- F 0.10" (2,5 mm)
- I 1.85" (47 mm)
- L_(max) 4.13" (105 mm)



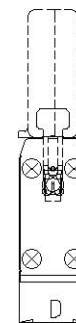
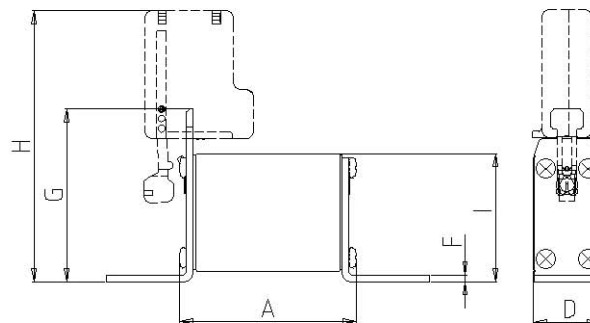
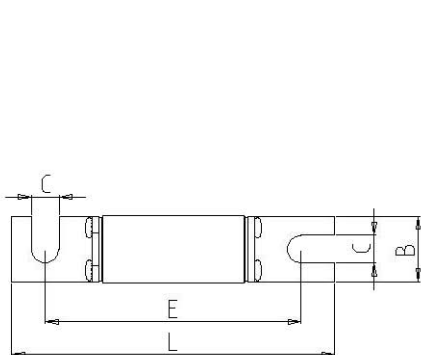


Fuses for Semiconductor Protection

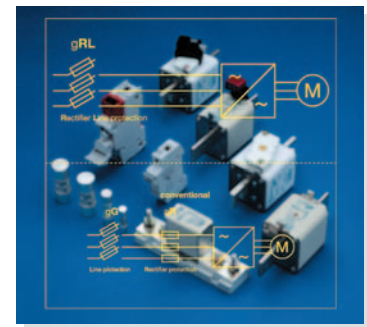
Type gRL(gS)

Size 000	Rated Voltage AC 690 / 700 V	Standard IEC 60269-4 / UL 248-13 / DIN 43653
--------------------	--	--

Rated Current [A]	Part No.	UL Rec.	Weight [kg/1]	Pack
16	20 558 34.16	✓	0.18	6
20	20 558 34.20	✓	0.18	6
25	20 558 34.25	✓	0.18	6
32	20 558 34.32	✓	0.18	6
40	20 558 34.40	✓	0.18	6
50	20 558 34.50	✓	0.18	6
63	20 558 34.63	✓	0.18	6
80	20 558 34.80	✓	0.18	6



A	2.17" (55 mm)
B	0.80" (20 mm)
C	0.33" (8,5 mm)
D	0.80" (20,4 mm)
E	3.07" (78 mm)
F	0.08" (2 mm)
G	2.10" (53 mm)
H	3.30" (83 mm)
I	1.54" (39 mm)
L_(max)	3.94" (100 mm)



Fuses for Semiconductor Protection

Type gRL(gS)

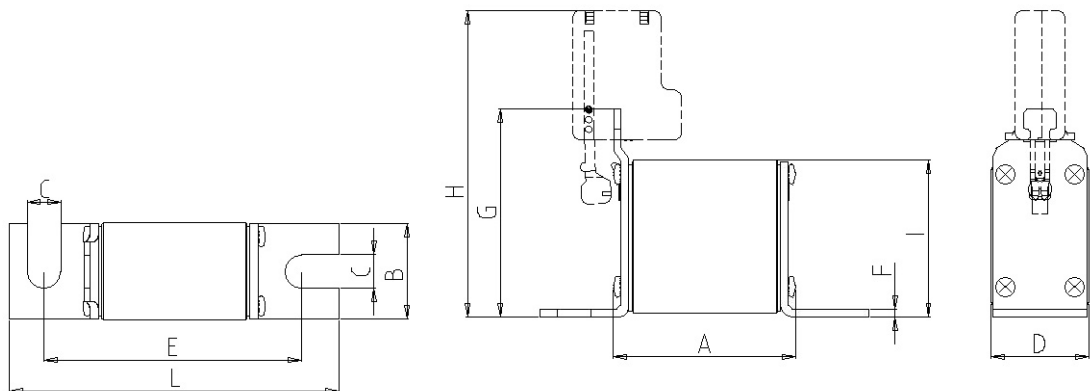
Size
00

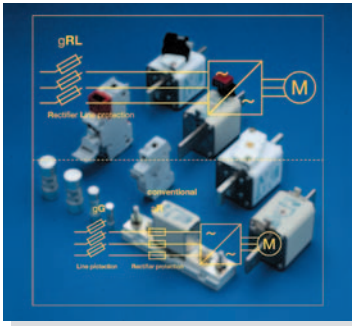
Rated Voltage
AC 690 / 700 V

Standard
IEC 60269-4 / UL 248-13 / DIN 43653

Rated Current [A]	Part No.	UL Rec.	Weight [kg/1]	Pack
100	20 412 34.100	✓	0.21	3
125	20 412 34.125	✓	0.21	3
160	20 412 34.160	✓	0.21	3
200	20 412 34.200	✓	0.21	3

- A** 2.17" (55 mm)
- B** 1.13" (28.8 mm)
- C** 0.40" (10.3 mm)
- D** 1.16" (29.5 mm)
- E** 3.07" (78 mm)
- F** 0.10" (2.5 mm)
- G** 2.48" (63 mm)
- H** 3.70" (93 mm)
- I** 1.85" (47 mm)
- L_(max)** 4.13" (105 mm)



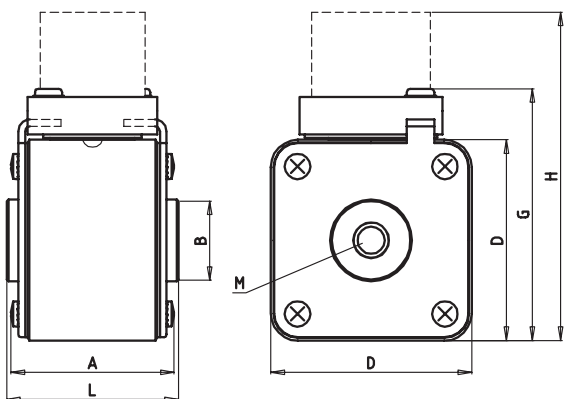


Fuses for Semiconductor Protection

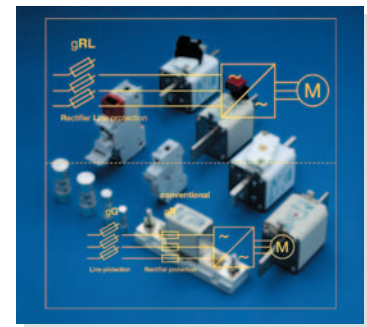
Type gRL(gS)

Size SQB1	Rated Voltage AC 690 V	Standard IEC 60269-4 Metric Thread M 8
----------------------------	---	---

Rated Current [A]	Part No.	UL Rec.	Weight [kg/1]	Pack
63	20 252 34.63		0.24	3
80	20 252 34.80		0.27	3
100	20 252 34.100		0.27	3
125	20 252 34.125		0.27	3
160	20 252 34.160		0.27	3
200	20 252 34.200		0.27	3
250	20 252 34.250		0.37	3
315	20 252 34.315		0.37	3



A	1.87" (47.5 mm)
B	0.94" (24 mm)
D	2.00" (51 mm)
G	2.60" (66 mm)
H	3.50" (89 mm)
L	2.00" (51 mm)
M	M8



Fuses for Semiconductor Protection

Type gRL(gS)

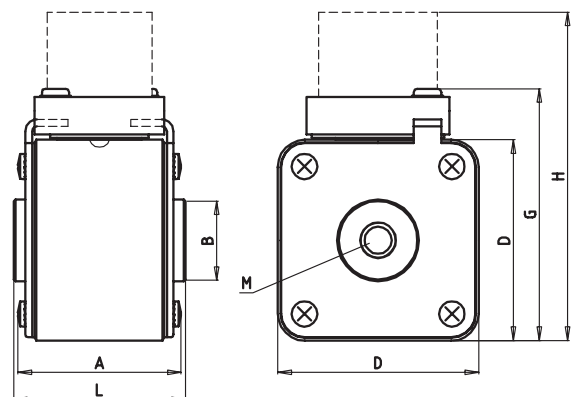
Size
SQB2

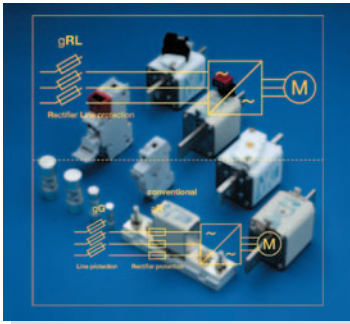
Rated Voltage
AC 690 V

Standard
IEC 60269-4 Metric Thread M 10

Rated Current [A]	Part No.	UL Rec.	Weight [kg/1]	Pack
160	20 253 34.160		0.65	3
200	20 253 34.200		0.65	3
250	20 253 34.250		0.65	3
315	20 253 34.315		0.65	3
400	20 253 34.400		0.65	3
450	20 253 34.450		0.65	3
500	20 253 34.500		0.65	3

A	1.87" (47.5 mm)
B	0.94" (24 mm)
D	2.36" (60 mm)
G	2.95" (75 mm)
H	3.86" (98 mm)
L	2.00" (51 mm)
M	M10



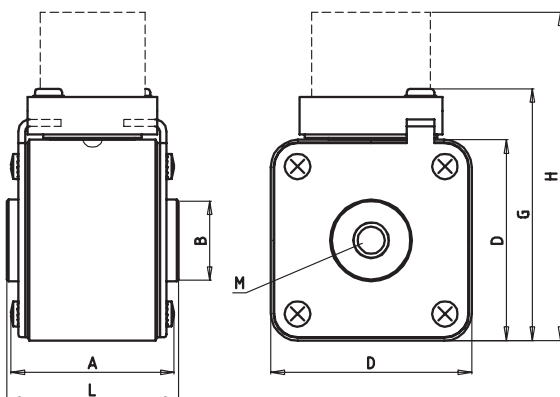


Fuses for Semiconductor Protection

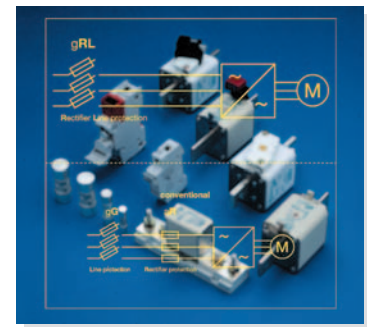
Type gRL(gS)

Size SQB3	Rated Voltage AC 690 V	Standard IEC 60269-4 Metric Thread M 12
----------------------------	---	--

Rated Current [A]	Part No.	UL Rec.	Weight [kg/1]	Pack
315	20 254 34.315		0.88	3
400	20 254 34.400		0.88	3
500	20 254 34.500		0.88	3
630	20 254 34.630		0.88	3
710	20 254 34.710		0.88	3
800	20 254 34.800		0.88	3



A	1.93" (49 mm)
B	1.10" (28 mm)
D	2.87" (73 mm)
G	3.46" (88 mm)
H	4.37" (111 mm)
L	2.00" (51 mm)
M	M12



Fuses for Semiconductor Protection

Type gRL(gS)

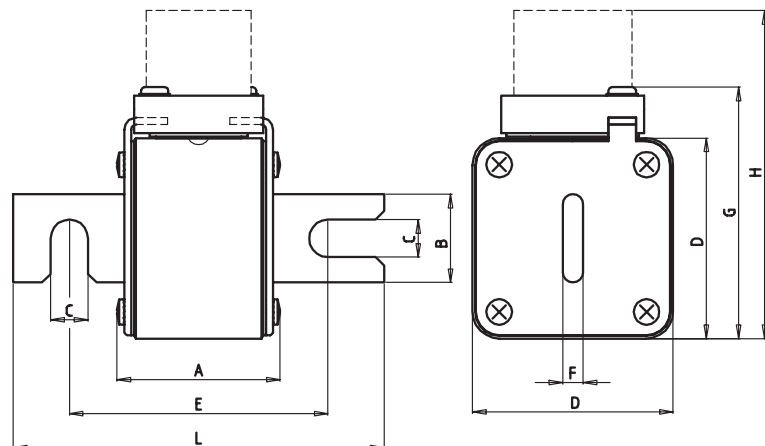
Size
SQB1

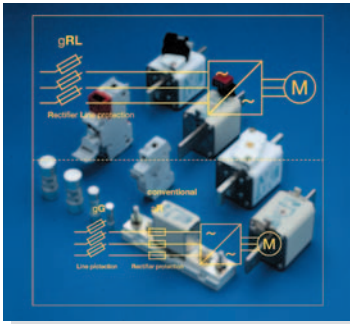
Rated Voltage
AC 690 V

Standard
IEC 60269-4 DIN 43653

Rated Current [A]	Part No.	UL Rec.	Weight [kg/1]	Pack
63	20 271 34.63		0.24	3
80	20 271 34.80		0.27	3
100	20 271 34.100		0.27	3
125	20 271 34.125		0.27	3
160	20 271 34.160		0.27	3
200	20 271 34.200		0.37	3
250	20 271 34.250		0.37	3
315	20 271 34.315		0.37	3

- A** 1.87" (47.5 mm)
- B** 1.02" (26 mm)
- C** 0.43" (11 mm)
- D** 2.00" (51 mm)
- E** 4.17" (106 mm)
- F** 0.24" (6 mm)
- G** 2.60" (66 mm)
- H** 3.50" (89 mm)
- L** 5.28" (134 mm)



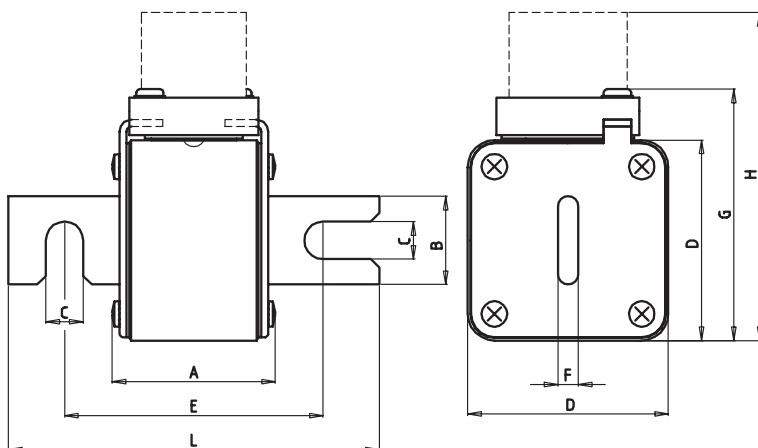


Fuses for Semiconductor Protection

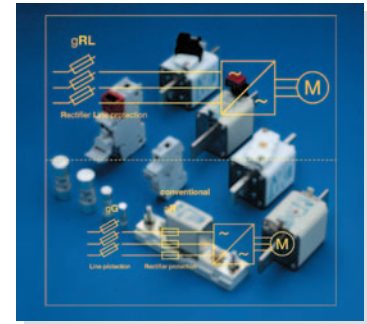
Type gRL(gS)

Size SQB2	Rated Voltage AC 690 V	Standard IEC 60269-4 DIN 43653
---------------------	----------------------------------	--

Rated Current [A]	Part No.	UL Rec.	Weight [kg/1]	Pack
160	20 274 34.160		0.65	3
200	20 274 34.200		0.65	3
250	20 274 34.250		0.65	3
315	20 274 34.315		0.65	3
400	20 274 34.400		0.65	3
450	20 274 34.450		0.65	3
500	20 274 34.500		0.65	3



A	1.87" (47.5 mm)
B	1.02" (26 mm)
C	0.43" (11 mm)
D	2.36" (60 mm)
E	4.17" (106 mm)
F	0.24" (6 mm)
G	2.95" (75 mm)
H	3.86" (98 mm)
L	5.28" (134 mm)



Fuses for Semiconductor Protection

Type gRL(gS)

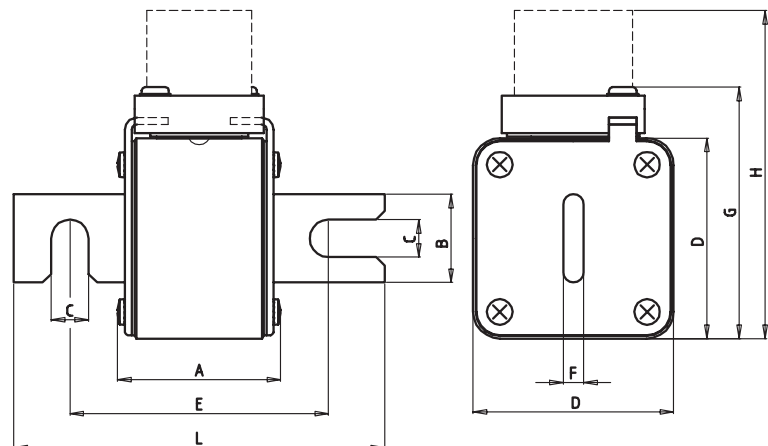
Size
SQB3

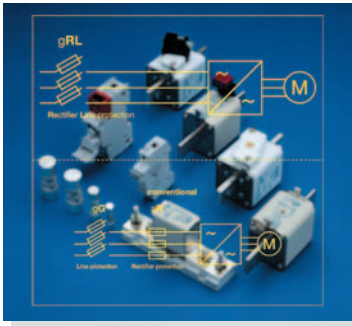
Rated Voltage
AC 690 V

Standard
IEC 60269-4 DIN 43653

Rated Current [A]	Part No.	UL Rec.	Weight [kg/1]	Pack
315	20 277 34.315		0.88	3
400	20 277 34.400		0.88	3
500	20 277 34.500		0.88	3
630	20 277 34.630		0.88	3
710	20 277 34.710		0.88	3
800	20 277 34.800		0.88	3

- A 1.93" (49 mm)
- B 1.38" (35 mm)
- C 0.43" (11 mm)
- D 2.87" (73 mm)
- E 4.17" (106 mm)
- F 0.24" (6 mm)
- G 3.46" (88 mm)
- H 4.37" (111 mm)
- L 5.28" (134 mm)



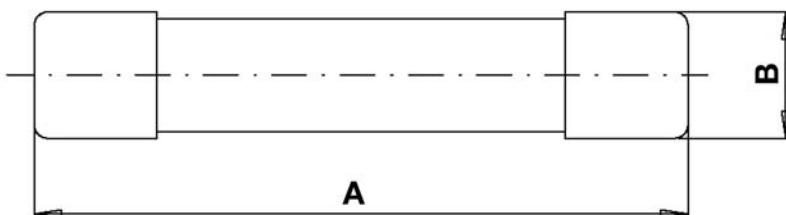


Fuses for Semiconductor Protection

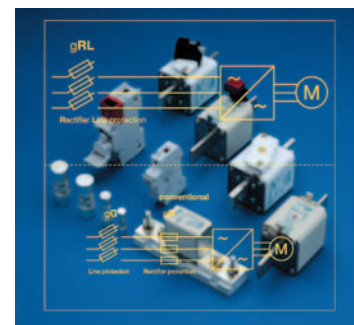
Type gRL(gS)

Size **6.3 x 32 mm** Rated Voltage **AC 400 V** Standard **IEC 60269-4 VDE 0636 part 40**

Rated Current [A]	Part No.	UL Rec.	Weight [kg/1]	Pack
6.3	70 065 84.6.3	✓	0.009	10
8	70 065 84.8	✓	0.009	10
10	70 065 84.10	✓	0.009	10
12.5	70 065 84.12.5	✓	0.009	10
16	70 065 84.16	✓	0.009	10
20	70 065 84.20	✓	0.009	10



A 1.26" (32 mm)
B 0.25" (6.35 mm)



Fuses for Semiconductor Protection

Type gRL(gS)

Size
10 x 38 mm

Rated Voltage
AC 500 V (IEC) · AC 600 V (UL)

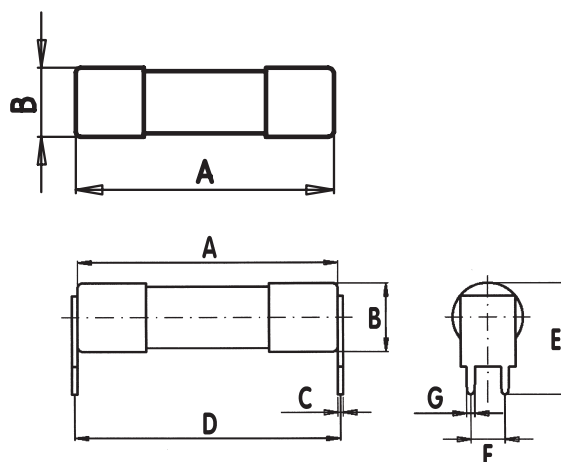
Standard
IEC 60269-4 / UL 248-13

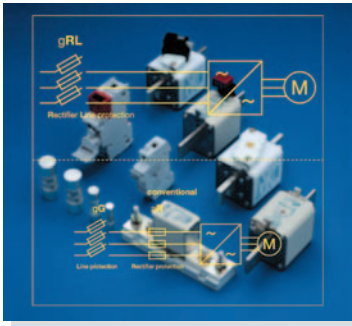
Rated Current [A]	Part No.	Part No. PCB Mounting	UL Rec.	Weight [kg/1]	Pack
6	60 034 34.6	60 064 34.6	✓	0.9	10
8	60 034 34.8	60 064 34.8	✓	0.9	10
10	60 034 34.10	60 064 34.10	✓	0.9	10
12	60 034 34.12	60 064 34.12	✓	0.9	10
16	60 034 34.16	60 064 34.16	✓	0.9	10
20	60 034 34.20	60 064 34.20	✓	0.9	10
25	60 034 34.25	60 064 34.25	✓	0.9	10
30	60 034 34.30	60 064 34.30	✓	0.9	10

A 1.50" (38 mm)
B 0.40" (10 mm)

PCB Mounting

A 1.50" (38 mm)
B 0.40" (10 mm)
C 0.03" (0.8 mm)
D 1.53" (16.4 mm)
E 0.65" (16.4 mm)
F 0.20" (5.1 mm)
G 0.05" (1.2 mm)





Fuses for Semiconductor Protection

Type gRL(gS)

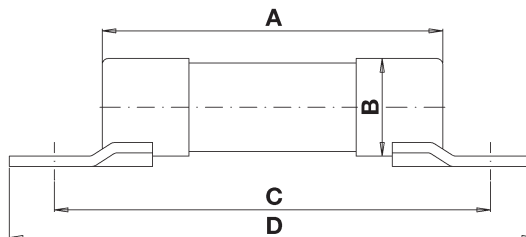
Size **14 x 51 mm** Rated Voltage **AC 690 / 700 V** Standard **IEC 60269-4 / UL 248-13**

Rated Current [A]	Part No. without Striker	Part No. with Striker	Part No. Fixing Center 63,5 mm	UL Rec.	Weight [kg/1]	Pack
10	50 124 34.10	50 126 34.10	50 129 34.10	✓	0.022	10
12	50 124 34.12	50 126 34.12	50 129 34.12	✓	0.022	10
16	50 124 34.16	50 126 34.16	50 129 34.16	✓	0.022	10
20	50 124 34.20	50 126 34.20	50 129 34.20	✓	0.022	10
25	50 124 34.25	50 126 34.25	50 129 34.25	✓	0.022	10
30	50 124 34.30	50 126 34.30	50 129 34.30	✓	0.022	10
32	50 124 34.32	50 126 34.32	50 129 34.32	✓	0.022	10
35	50 124 34.35	50 126 34.35	50 129 34.35	✓	0.022	10
40	50 124 34.40	50 126 34.40	50 129 34.40	✓	0.022	10

Part No. 50 124 34. ...



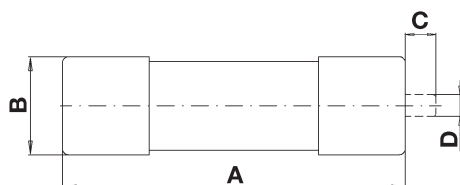
Part No. 50 129 34. ...



Without Striker

A	2.00" (51 mm)
B	0.55" (14 mm)

Part No. 50 126 34. ...

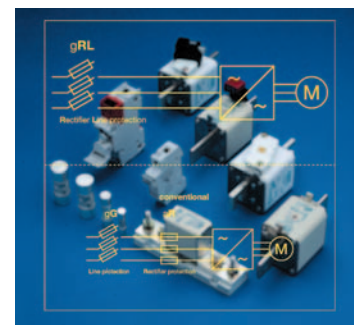


With Striker

A	2.00" (51 mm)
B	0.55" (14 mm)
C _{min}	0.28" (7 mm)
D	0.20" (4.9 mm)

Fixing Center 63,5 mm

A	2.00" (51 mm)
B	0.55" (14 mm)
C	0.00" (63.5 mm)
D	0.00" (77 mm)
E	0.00" (8.7 mm)
F	0.00" (5.5 mm)



Fuses for Semiconductor Protection

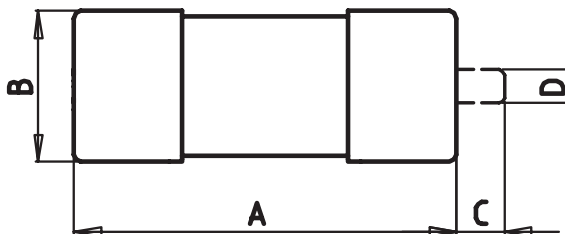
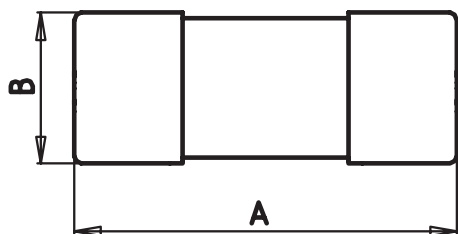
Type gRL(gS)

Size
22 x 58 mm

Rated Voltage
AC 690 / 700 V

Standard
IEC 60269-4 / UL 248-13

Rated Current [A]	Part No. without Striker	Part No. with Striker	UL Rec.	Weight [kg/1]	Pack
25	50 140 34.25	50 142 34.25		0.055	10
30	50 140 34,30	50 142 34.30		0.055	10
32	50 140 34.32	50 142 34.32		0.055	10
35	50 140 34.35	50 142 34.35		0.055	10
50	50 140 34.50	50 142 34.50		0.055	10
63	50 140 34.63	50 142 34.63		0.055	10
80	50 140 34.80	50 142 34.80		0.055	10
100	50 140 34.100	50 142 34.100		0.055	10



Without Striker	
A	2.28" (58 mm)
B	0.87" (22 mm)
With Striker	
A	2.28" (58 mm)
B	0.87" (22 mm)
C _{min}	0.28" (7 mm)
D	0.20" (4.9 mm)